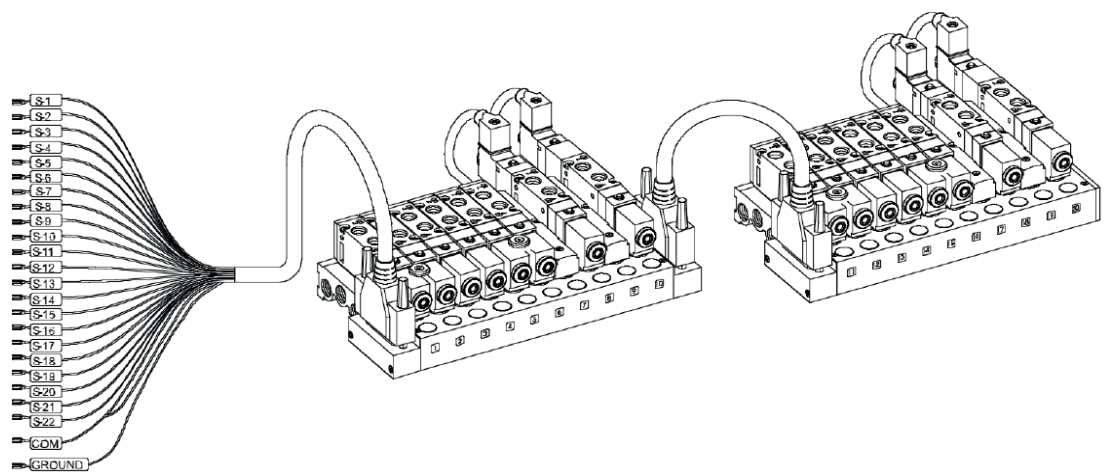
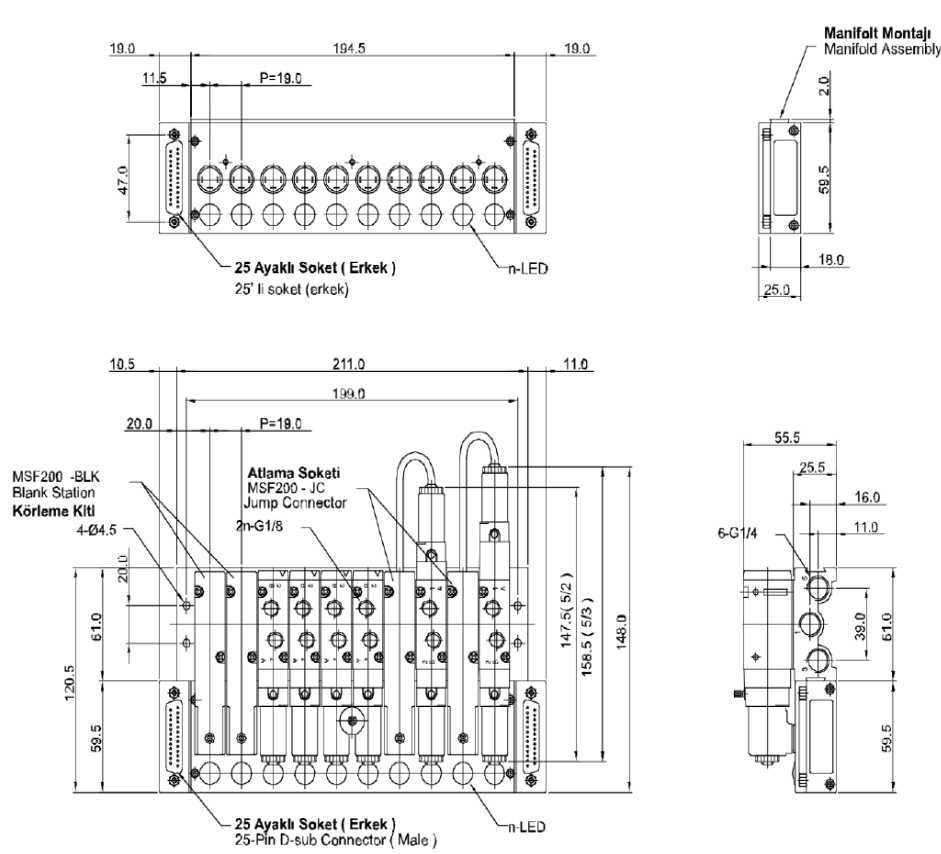


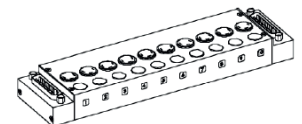
| Kabel Farbe/Wire Color | Pin No. | |
|--------------------------------|---------|--------|
| Schwartz/Black | 1 | S1 |
| Braun / Weiss-Brown/White | 14 | S2 |
| Braun/Brown | 2 | S3 |
| Rot / weiss-Red White | 15 | S4 |
| Rot- Red | 3 | S5 |
| Orange / weiss-Orange White | 16 | S6 |
| Orange-Orange | 4 | S7 |
| Grün / Weiss-Green White | 17 | S8 |
| Gelb-Yellow | 5 | S9 |
| Blau / Weiss-Blue White | 18 | S10 |
| Grün- Green | 6 | S11 |
| lila / Weiss- Purple White | 19 | S12 |
| Blau-Blue | 7 | S13 |
| Rot / Schwartz-Red/Black | 20 | S14 |
| Lila/Purple | 8 | S15 |
| Rot / Schwartz-Red/Black | 21 | S16 |
| Lila/Purple | 9 | S17 |
| Orange / Schwartz-Orange Black | 22 | S18 |
| Grau/White | 10 | S19 |
| Gelb / Schwartz-Green Black | 23 | S20 |
| Hellgrün/Light Green | 12 | S21 |
| Grau / Schwartz-Gray Black | 24 | S22 |
| Schwartz / Weiss-Black/White | 25 | COM |
| Lila/Schwartz-Pink Black | 13 | COM |
| Lila-Pink | 11 | GROUND |
| | | GROUND |



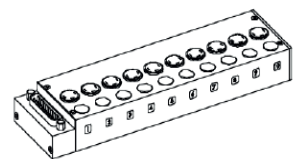
Technische Zeichnung und Montageteile/Technical Drawing & Assembly Parts



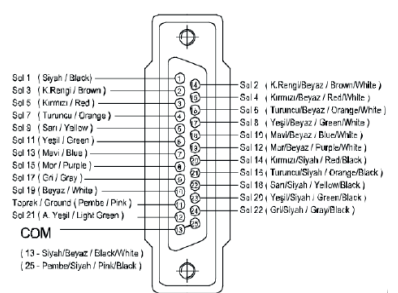
Doppelmodul/Double Module: MCS221-T10-D4



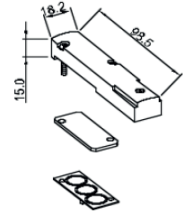
Einzelmodul/Single Module: MCS211-T10-D4



Socket-Verbindungen/Connector Pins



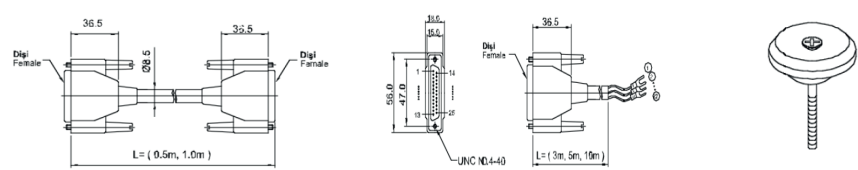
Blanking Kit: MCF200-BLK



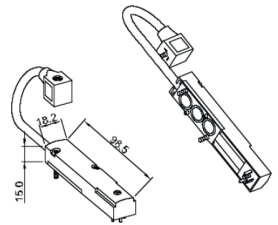
Doppelstecker/Double Connector:

Einzelstecker/Single Connector: MCS25-SC-30/50/100

Spule/Coil Fix: MCS200-CP



Jump Connector: MSF200-JC



Bestellnummer/Ordering Code

| MCS2 | 1 | 1 | T04 | D4 |
|---|-----------------------|-------------------------------|--------------------------------|------------|
| Serie/Series | Funktion/Function | D-SUB Stecker/D-SUB Connector | Stationsnummer/Station Numbers | |
| MCS2-SF2000 Magnetventilbaugruppe Solenoid Valve Assembled | 0: Besteht Keine/None | 0: Besteht Keine/None | 0: Besteht Keine/None | D4: DC 24V |
| | 1: Single Module | 1: 25 D-SUB Stecker | T04-4 Stationsnummer/ Station | D2: DC 12V |
| | 2: Double Module | 1: 25 D-SUB Connector | T04-6 Stationsnummer/ Station | |
| | | | T04-8 Stationsnummer/ Station | |
| | | | T04-10 Stationsnummer/ Station | |
| | | | T04-12 Stationsnummer/ Station | |
| | | | T04-14 Stationsnummer/ Station | |